

Business Module Overview

Omnis Integrated Security Software

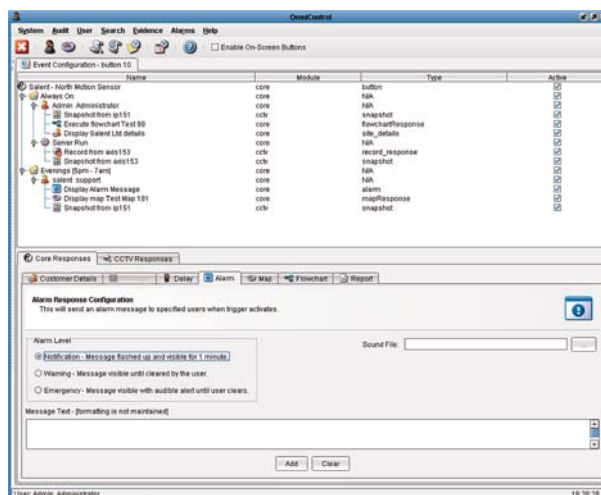
What are Business Modules ?

The Business Modules interrogate the data generated by the underlying systems and devices. Security systems contain a wealth of valuable information. This becomes substantially more useful and potent when the systems and their underlying data are integrated.

The Business Modules are designed to resolve industry specific problems by providing specific software for analysing and reporting on the underlying data and incoming events. They are designed to help you improve operating efficiency and increase profitability. The examples on this data sheet are a selection of business modules available :-

Monitoring Centres (RVRCs/ARCs)

- Ensures your alarm management and reporting meets BS8418 and ACPO/ACPOS guidelines.
- Supports Unique Reference Numbers (URN) to quickly make decisions on the correct Police Callout.
- Uses a single software package to manage and report on all alarms.
- The use of a unified front end simplifies and eases training and operational procedures. Instant visibility of the status of all alarmed sites.
- Compare the performance of different sites and quickly identify any problems with a site.
- Easily obtain statistics on how alarms are processed.
- As the centre extends its services into new monitoring areas, like Loan Work Worker Support and Vehicle Tracking, the Omnis system will support you.



Transportation

- Provides the software equivalent of a centralised “flight-recorder” or “black-box recorder” for vehicle fleets, be they buses, trams, trains or lorries.
- Automatic downloading and creation of Evidence Folders for all incidents.
- Produce tailored reports about the number and type of incidents per bus, per route, per depot and per driver.
- Reduce the number of incidents and compensatory injury claims by using targeted driver training.
- Full integration of GPRS Data, Ticketing Information, Telemetry Data (such as vehicle speed, acceleration and deceleration) and CCTV Surveillance.



Salent Ltd

Tel: +44 (0) 845 22 66 508
 Fax: +44 (0) 845 22 66 509

www.salent.co.uk

Business Module Overview

Omnis Integrated Security Software

What are Business Modules ?

The Business Modules interrogate the data generated by the underlying systems and devices. Security systems contain a wealth of valuable information. This becomes substantially more useful and potent when the systems and their underlying data are integrated.

The Business Modules are designed to resolve industry specific problems by providing specific software for analysing and reporting on the underlying data and incoming events. They are designed to help you improve operating efficiency and increase profitability. The examples on this data sheet are a selection of business modules available :-

Visitor Logging

- Provides a way of managing visitors and cross referencing deliveries and shipments.
- Links data generated from the access control and surveillance modules to visitor and shipment information entered into the system.
- Arrival of a visitor/ vehicle is used as a trigger for various responses.
- Responses could include informing the relevant person of the visitor arrival, start CCTV recording of the unloading/loading of the shipment and storing the footage to an evidence folder.

Name	Company	Visiting	ETA
Mr Jones	Plastics Ltd	Mrs Smith	14:00
John Brown	Morse Ltd	Mr Heinrich	16:00
Roger Full	Salent Ltd	George McAle	16:00



Maritime & Offshore

- Provides the software equivalent of “flight-recorder” or “black-box recorder” for shipping fleets or offshore installations.
- Comply with International Ship & Port Facility Security Legislation (ISPS) - Regulation XI-2/6.
- Full integration of Automatic Vessel ID Systems.
- On-board CCTV Surveillance with support for Digital, IP Marine grade and Ex-Rated cameras.
- RFID Tagging/People-On-Board monitoring.
- Alarm Logging of NEMA coded equipment.



Salent Ltd

Tel: +44 (0) 845 22 66 508
Fax: +44 (0) 845 22 66 509

www.salent.co.uk